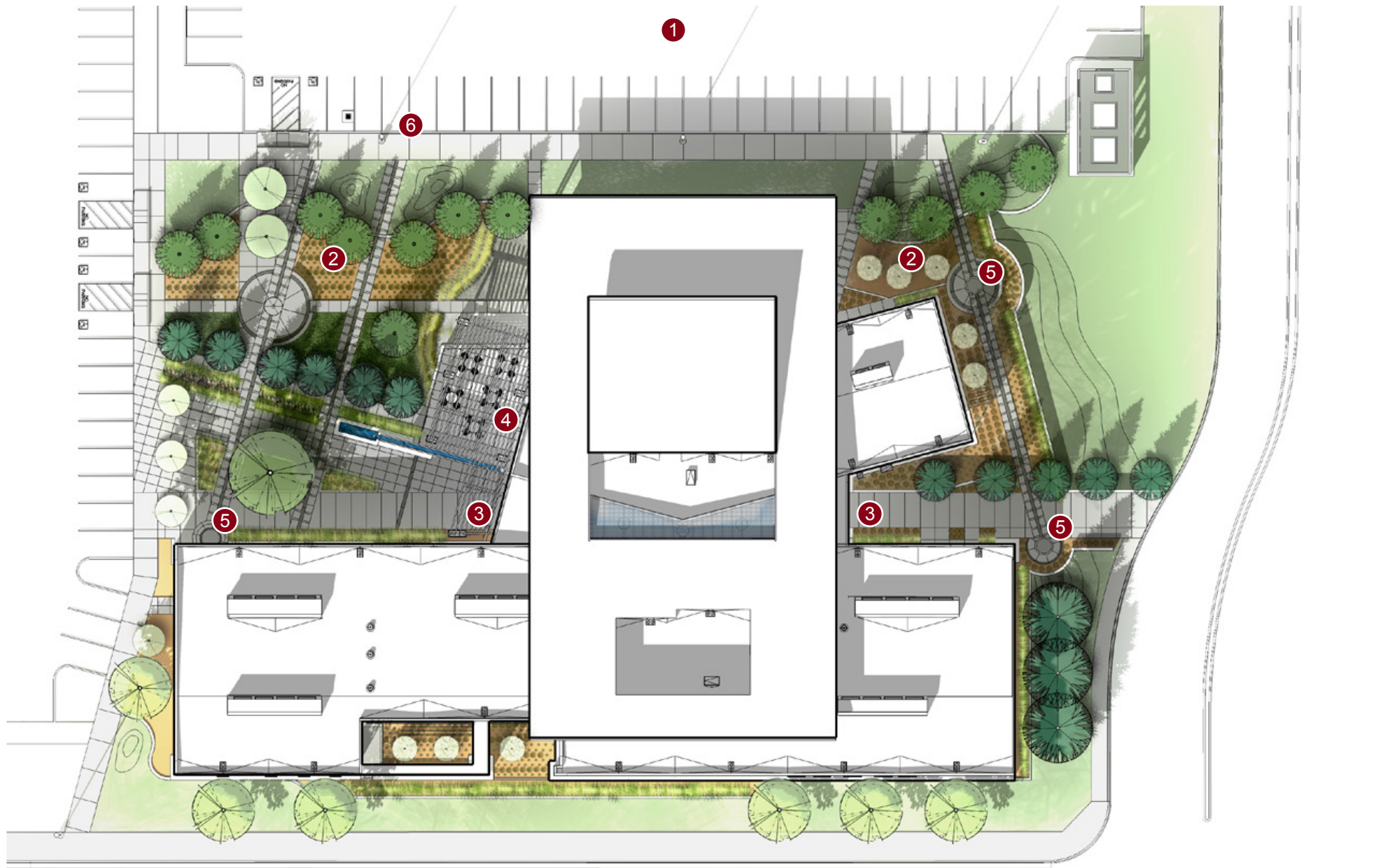




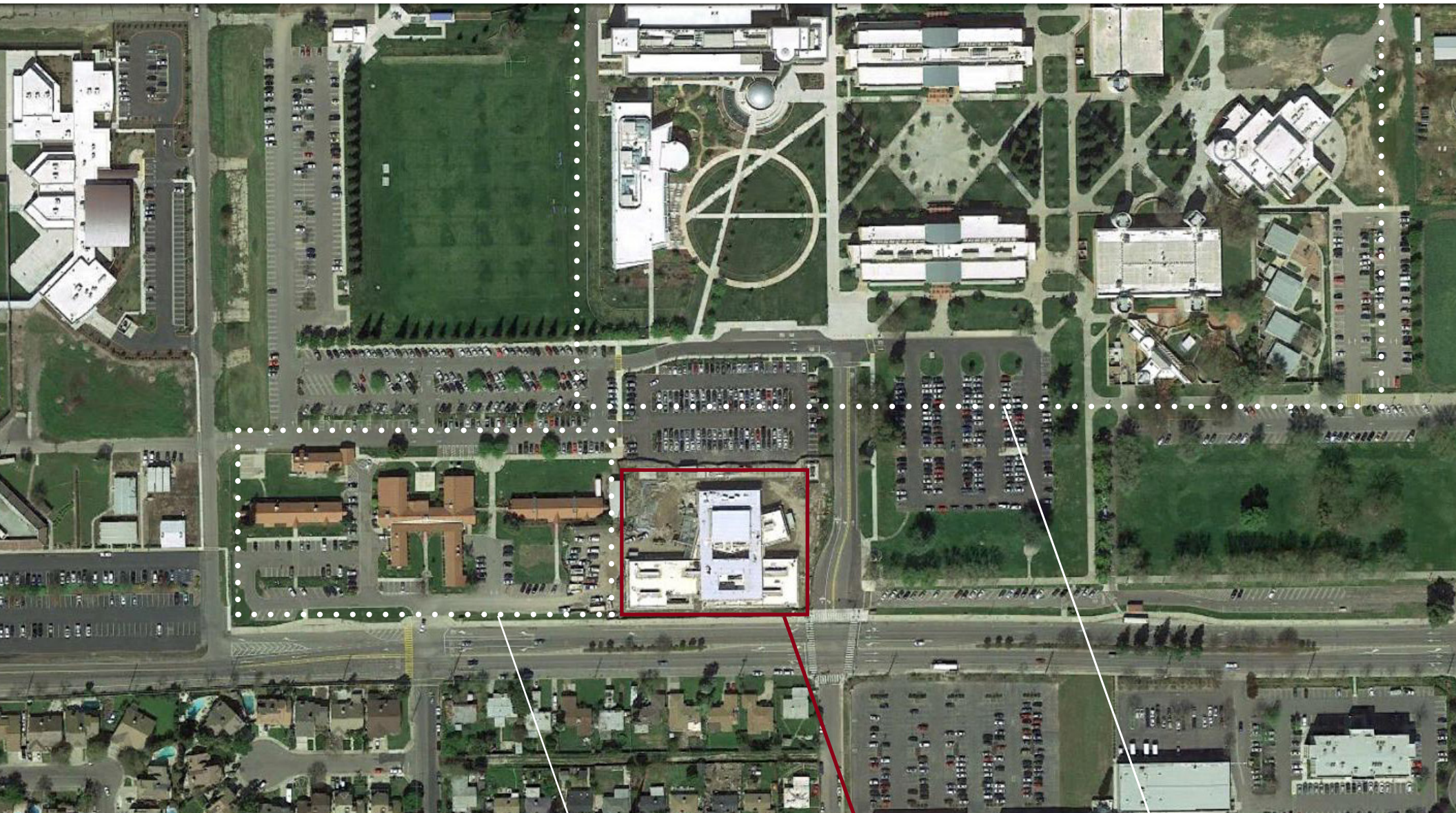
New District Office

Yosemite Community College District



1. Photovoltaics over parking lot (beyond)
2. Xeriscaping with native plants and trees
3. Building Entries
4. Shaded outdoor patio
5. Granite landscape features
6. EV charging stations



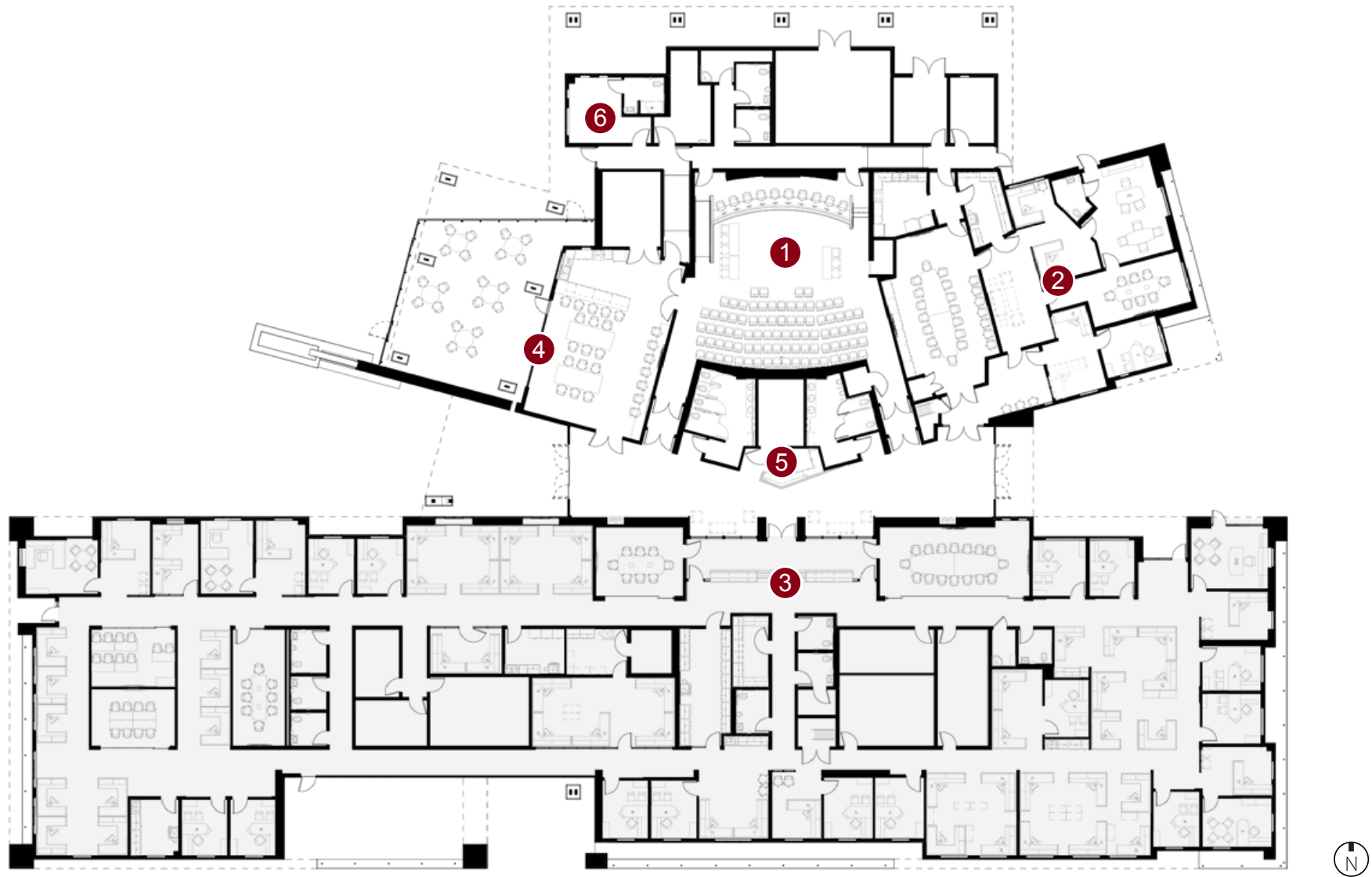


The Yosemite Community College District Office Building is designed to integrate with the existing campus architectural vernacular and draws inspiration from regional national State parks. This new building will occupy prominent site at the entrance to the Modesto Jr. College West Campus.

Former Administration Offices
(Decommissioned Army Barracks)

New District Office Building

Modesto Jr. College West Campus

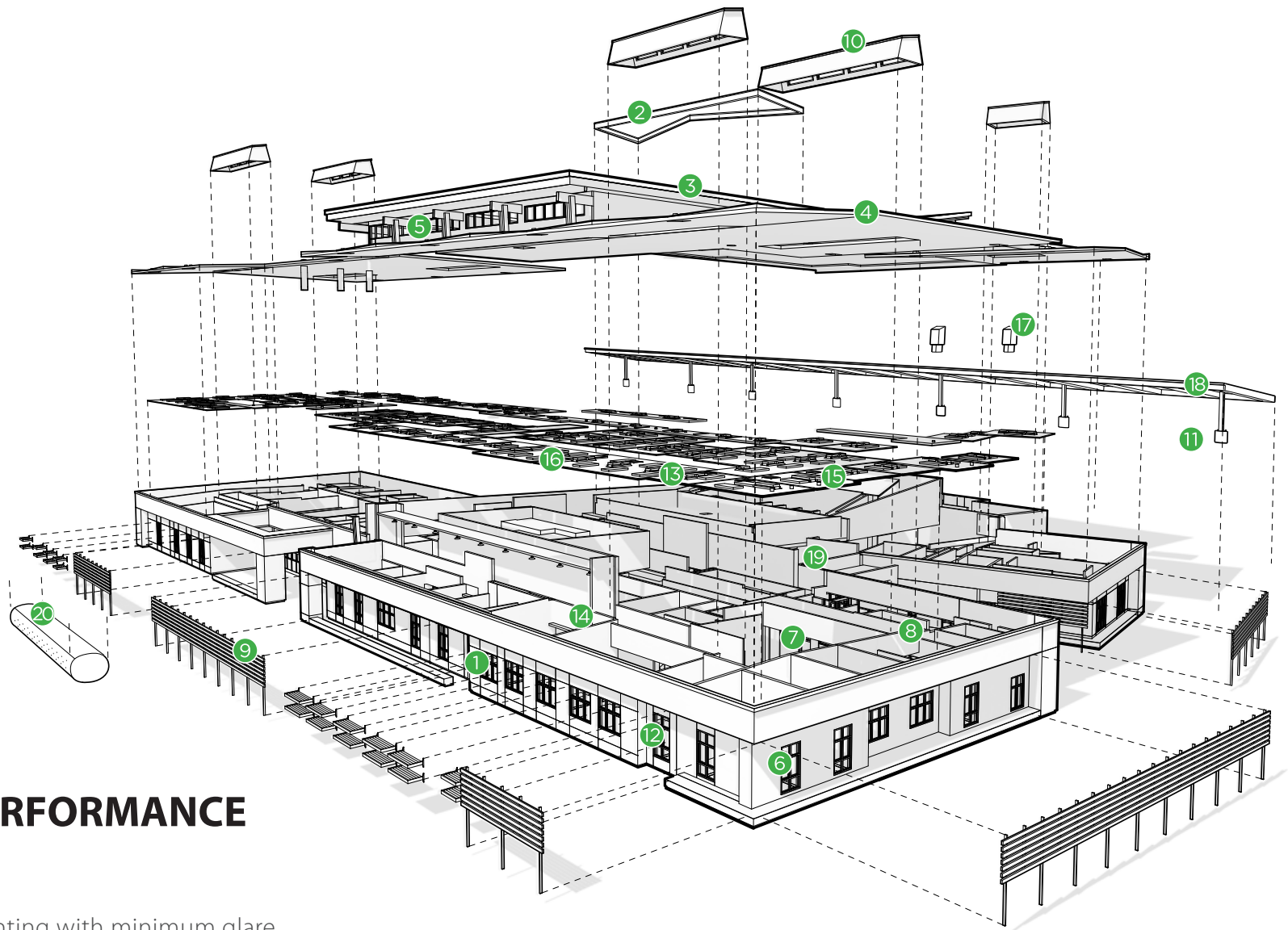


1. District Board Room
2. Chancellor's Suite
3. Administration Wing
4. Staff Lounge & Outdoor Patio
5. Reception Desk
6. Health & Fitness Room

28,400 Sq. Ft.







HIGH PERFORMANCE

Passive

1. Daylighting with minimum glare
2. Clerestory skylight, daylighting
3. Cool roof
4. High R- value roof
5. Interior clerestory windows for borrowed daylighting
6. Controllable fresh air operable window inlets
7. Thermal buoyancy
8. Highly insulated wall systems
9. Integrated shading systems, made of recycled materials
10. Roof monitors
11. Shaded parking for 118 stalls

Active

12. High efficiency thermally insulated glass
13. Chilled beam HVAC system, 30% energy savings
14. Daylight dimming & occupancy sensors
15. Highly efficient lighting fixtures LED, CFL, OLED
16. Motorized windows for ventilation controls
17. Four EV charging stations, designed infrastructure for six more
18. 275 KW solar array
19. Low-Flow fixtures throughout
20. 7,500 ft³ underground stormwater retention infiltration system





